



Career Planning and Development Centre

OFFICE OF STUDENT AFFAIRS, THE CHINESE UNIVERSITY OF HONG KONG

Career Services for Postgraduate Students



Welcome to CUHK!



Agenda

- *Career Planning Stages*
- *CPDC's Career Services*
- *Employment Policies for Non-local students*

Who are we?

Office of Student Affairs

Student Development
& Resources Section
(SDRS)

Learning and Cultural
Enhancement Section
(LCES)

Wellness and
Counselling Centre
(WACC)

Career
Planning and
Development
Centre
(CPDC)



To Do List in CUHK

- Study hard, play hard



- Enjoy hostel Life



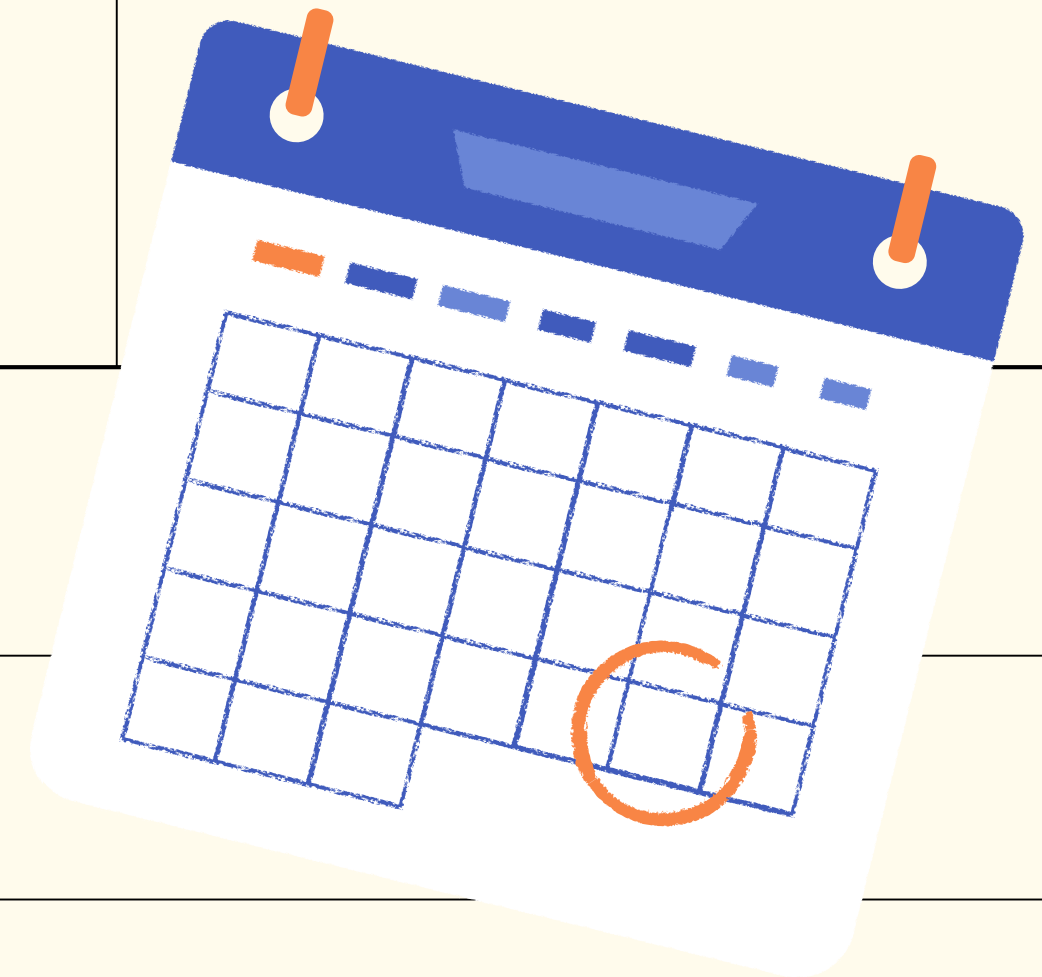
- Join extra - curricular activities



- Meet new friends and expand network



- And more?



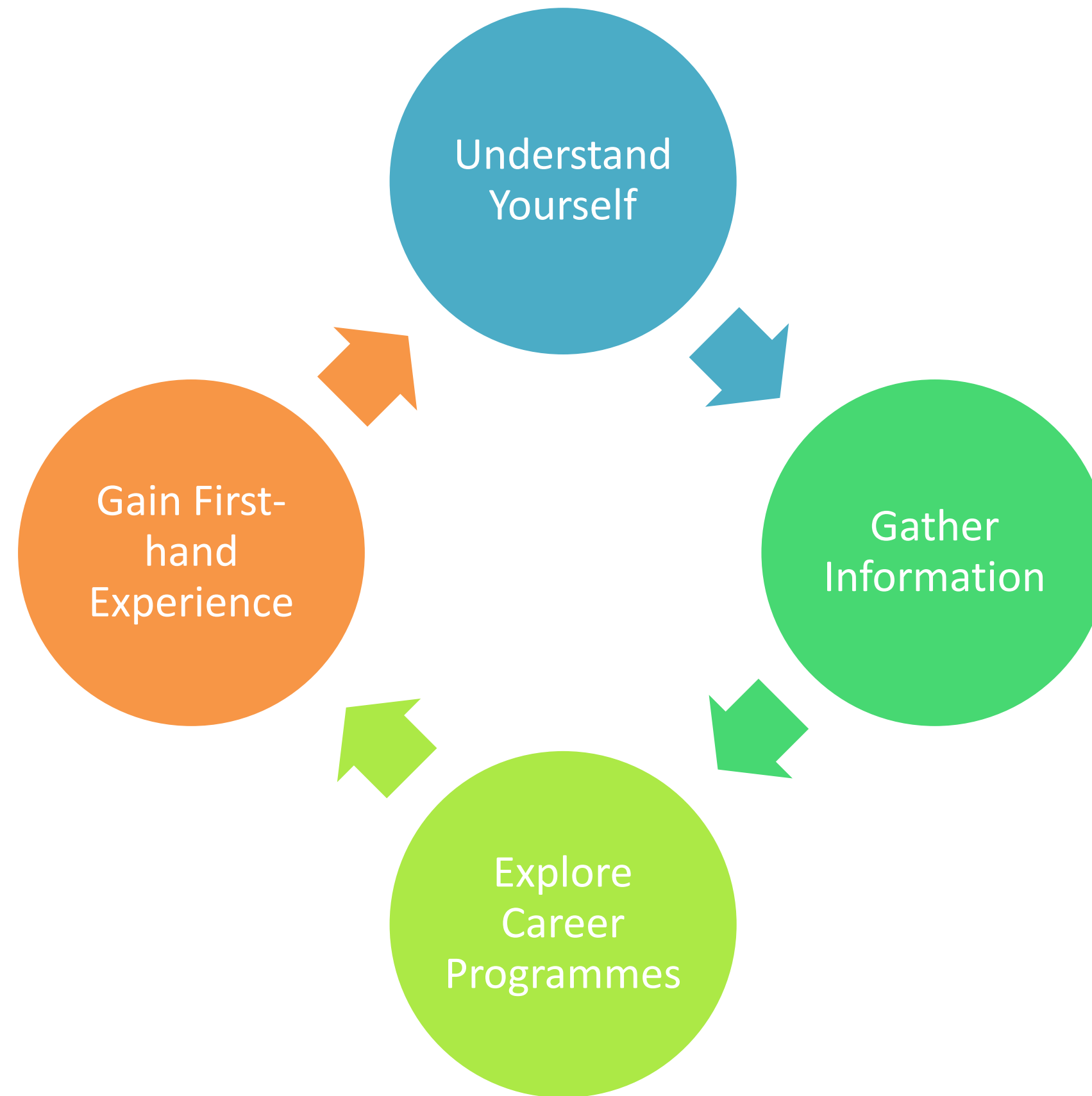
Career Planning

It's never too early to plan your career!

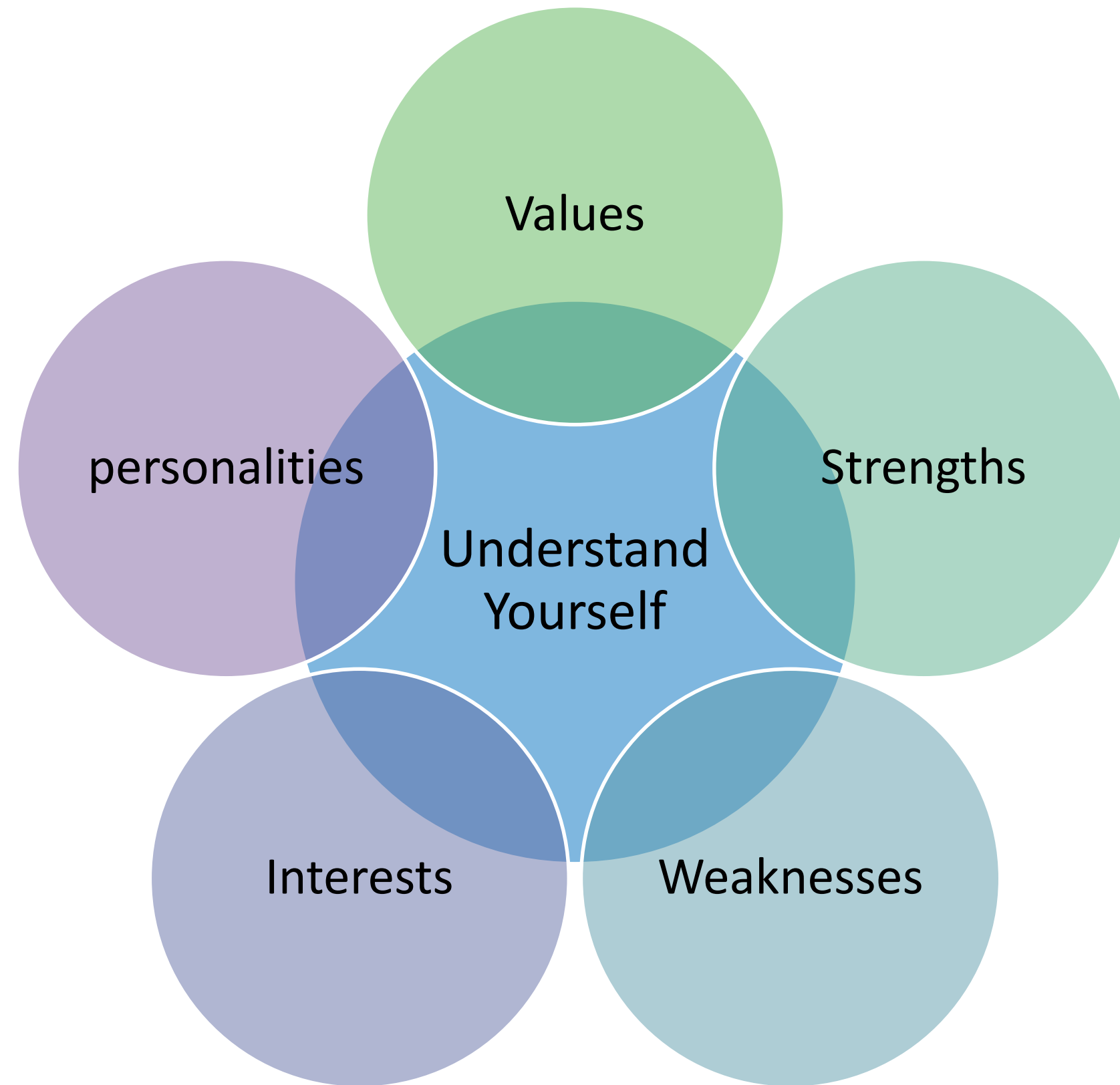
- The earlier you plan your career, the more opportunities you have upon graduation!
- Career planning saves your valuable time and energy!



Career Planning Stages



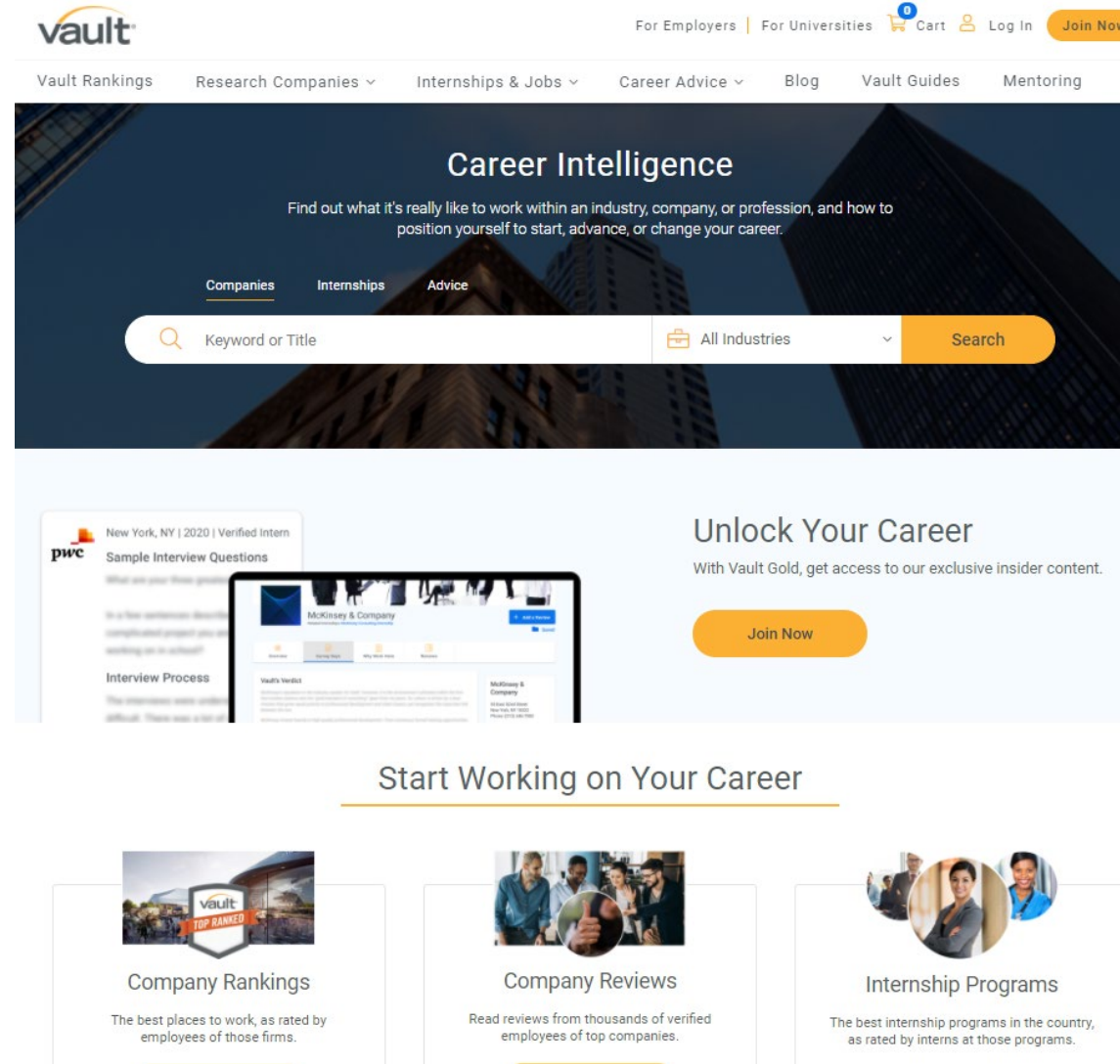
Career Planning Stages – Understand Yourself



Career Planning Stages – Gather Information

		Sep	Oct	Nov	Dec	Jan	Feb	Mar	Apr	May	Jun	Jul	Aug
Guidance programmes		Various guidance programmes include Graduate Orientation Programme, Meeting the Senior Executive / Leaders sessions, Meeting the Professionals/Alumni sessions, Career Counselling, Career Seminars, Resume Writing Workshops, Image Grooming Workshops, Mock Interview Workshops, etc. throughout the year.											
Global Internship Programme		Evaluation	Certificate Presentation Ceremony	Campus Briefings / Recruitment		Recruitment	Selection Interview	Job matching / company selection / offer			Internship exposure		
On-campus recruitment events for graduate jobs		Accounting / Banking / Financial Services				Accounting / Banking / Financial Services							
		Government-related / Public Utilities				Government-related / Public Utilities							
		Management Consulting				Management Consulting							
		Conglomerates / Fast Moving Consumer Goods / Property				Conglomerates / Fast Moving Consumer Goods / Property							
			Telecom / Communications / IT				Telecom / Communications / IT						
	Airlines / Logistics / Engineering / Manufacturing / Pharmaceuticals				Airlines / Logistics / Engineering / Manufacturing / Pharmaceuticals								
Careers Fair						Careers Fair							
Mentorship and enrichment programmes	CUHK Mentorship Programme	Quarterly reporting			Quarterly reporting	Kick-off of mentorship / New Year Gathering		Quarterly reporting			Quarterly reporting	Summer Newsletter	
	Mentorship throughout the year												
Mentorship and enrichment programmes	Police programmes • Auxiliary Police (Undergraduates) Scheme (AUS) • Police Mentorship Programme (PMP)	Recruitment			Selection				Inauguration (PMP)		Training (AUS)		
												Job attachment (PMP)	
Summer jobs / internships	HKSAR Government					Administrative Service Summer Internship Programme (Recruitment)		Post-Secondary Student Summer Internship (Recruitment)			Internship exposure		
	Others			Commercial sector and others (Recruitment)						Internship exposure			
Career events for postgraduate/non-local students		Orientation programmes on career services / employment policy for non-local students			Alumni Sharing Sessions		Careers Day for Non-local Students		Mainland Careers Fairs				

Career Planning Stages – Gather Information



JobsDB


CT goodjobs
Powered by Career Times

CU Job Link

jijjis

On Grad

Career Planning Stages – Explore Career Programmes

 Career Planning and Development Centre
OFFICE OF STUDENT AFFAIRS, THE CHINESE UNIVERSITY OF HONG KONG



Mastering Assessment Centers: A Comprehensive Guide for Case Analysis and Mock Practice

Date: 12 April 2022 (Tue)
Time: 2:30–4:30pm
Format: Zoom
Language: English

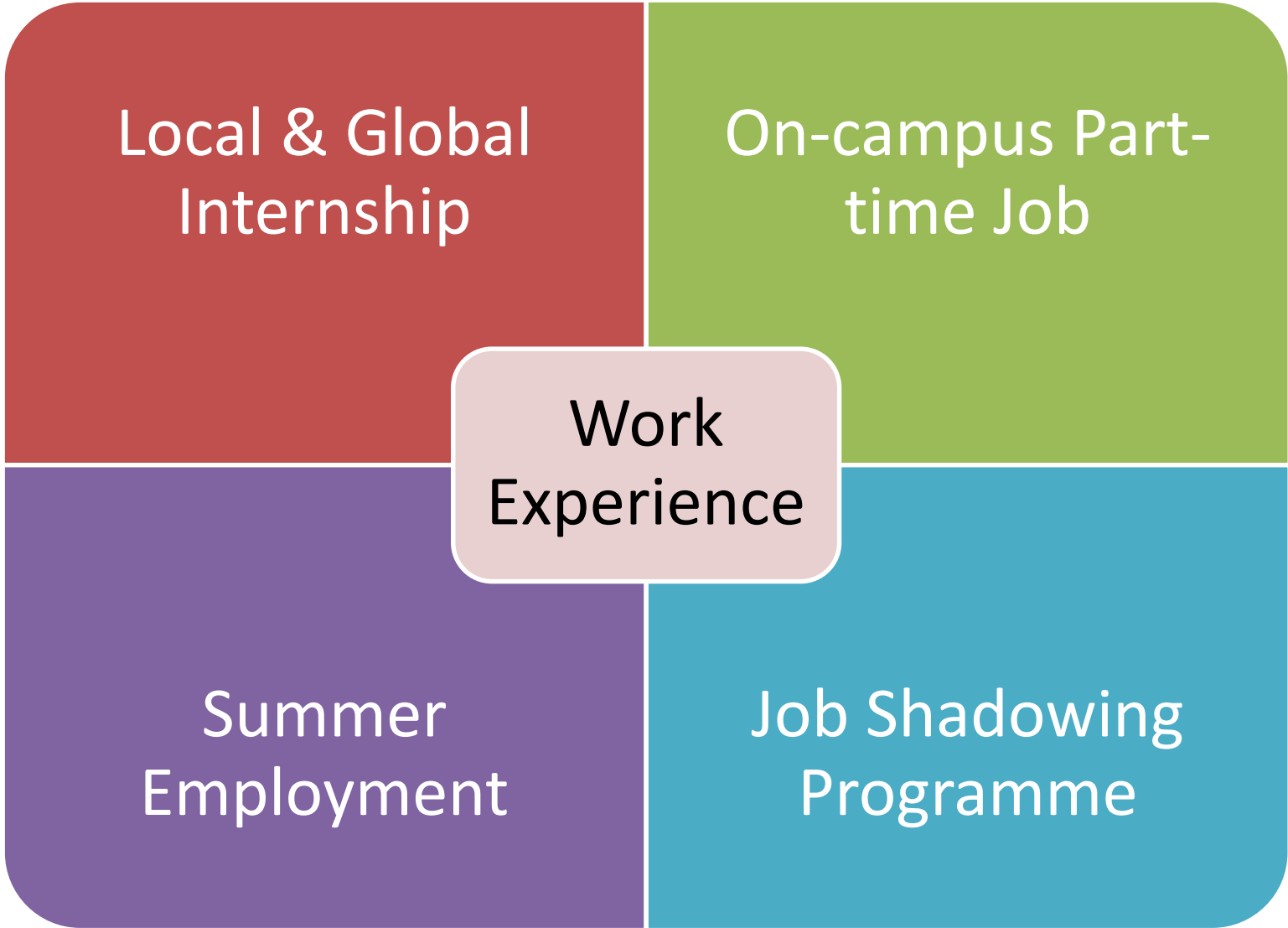
Content:

- Overview of the latest recruitment process and sample interview questions
- Industry specific questions, behavioural questions and brainteasers often asked in banking, consulting/advisory, accounting and property interviews
- Top tips and samples on assessment centre – how to ace the case analysis, case discussion and team game
- Mock practice of case analysis

Speaker:
Steven Lui, co-founder of HKCareers



Career Planning Stages – Gain First-hand Experience



CPDC's Career Services – Career Guidance and Enrichment Programme

- 1. Early Career Planning
- 2. Industry Updates
- 3. Career Insights
- 4. Cross Cultural Exposure
- 5. Job Hunting Skills
- 6. Practical Training
- 7. Career Enrichment Events
- 8. Innovation & Entrepreneurship

Career Planning Guide

It's never too early to plan your career.

Step up and explore!



Stage 1: Self-Exploration

Self-exploration is the first and significant step to start your career planning. By identifying your values, interests, life purposes, strengths and weaknesses, you will get a clear picture of who you are and what you would like to do. Never miss this step to ask WHY!

Suggested Guidance Service Category:

1: Early Career Planning



Stage 2: Understanding about the World of Work

After knowing about yourself, you may explore different job options and industries which fit you and uncover your potentials. Searching online, expanding network, joining more career guidance programmes to get insights such as business ethics and the trend of future of work. As workplace mobility has been increasing, it's good to learn different work culture and never limit your options.

Suggested Guidance Service Categories:

2: Industry Updates 3: Career Insights
4: Cross-Cultural Exposure

Stage 3: Job Search and Career Establishment

It's time to ask HOW. You should sharpen the essential skills to secure your ideal jobs. Polishing your CV and cover letter, discovering the best ways to present yourself in interviews and learning how to handle job offers professionally. Don't forget to engage in career enrichment events to broaden your social network which paves the way for your successful career.

Suggested Guidance Service Categories:

5: Job Hunting Skills 6: Practical Training 7: Career Enrichment Events
8: Innovation and Entrepreneurship



No matter which career planning stages you are, follow this guide to join career guidance programmes under 8 different categories. Still curious about how to make your dreams come true? Contact us! We are always here to support you.



 cpdc@cuhk.edu.hk

 CUHK-Career Planning and Development Centre, OSA

 @cpdc_osa_cuhk

 <https://cpdc.osa.cuhk.edu.hk/>

CPDC's Career Services – Internship Opportunities

- Local Company Internship
- Global Internship Programme (GIP)
- STEM Internship Scheme
- HKMA Banking Talent Programme
- Summer Government Internship Scheme



CPDC's Career Services – Mentorship Programmes

- CUHK Mentorship Programmes (CUMP)
- Professionals from diverse industries
- Experienced mentors with 15+ years of work experience
- Fruitful mentoring activities

MEN TOR

*CUHK
Mentorship
Programme
2022*

MEN TEE

*For Non-Final Year Students
from ALL Disciplines*

Career-Oriented Mentorship Since 2002

CPDC's Career Services – Mentorship Programmes

- Young Alumni Career-Supporting Network
- Mentors from same faculty of CUHK
- Young alumni provide advice on study, career and personal development in side-by-side approach

 Career Planning and Development Centre
OFFICE OF STUDENT AFFAIRS, THE CHINESE UNIVERSITY OF HONG KONG

#STEPUPCUHKERS

**YOUNG
ALUMNI
CAREER-
SUPPORTING
NETWORK**

Every cloud has a silver lining,
find ours together!

CPDC X FACULTIES NEW INITIATIVE

- Get insights from young alumni who have gone through what you are facing
- Empower you to discover life values and career directions
- Build network with young alumni and CUHK community

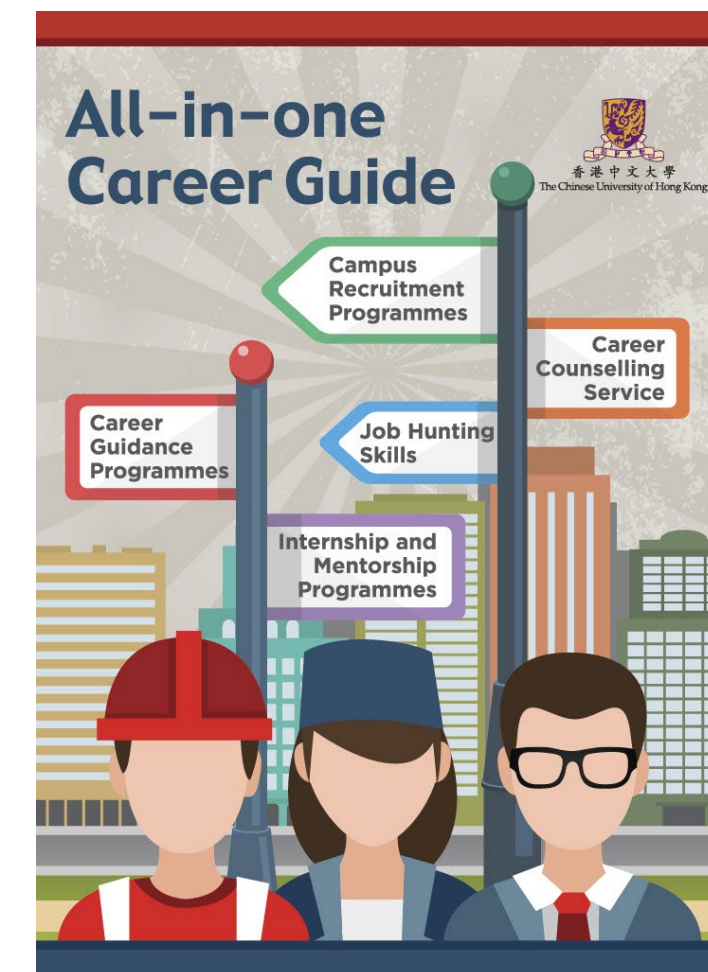


CHECK WITH YOUR HOME FACULTY / CPDC



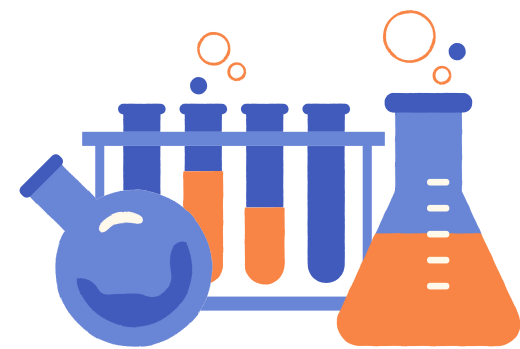
CPDC's Career Services – Counselling Services & Updated Job Market Information

- One-on-one career counselling with HR professionals and career counsellors
- Online career resources, e.g. Vault.com
- Career guide
- CPDC website, email and social media
- CU Job Link (<https://cpdc.osa.cuhk.edu.hk/student/login>)
- Joint Institution Job Information System (JIJIS) (<http://www.jijis.org.hk>)



CPDC's Career Services – Graduate Employment Survey

- Status upon graduation
- Employment situation by sectors and career fields
- Job searching process



Employment Policies for Non-local Students

Requirements

- Possessing valid “No Objection Letter” (NOL) true copy
- Full-time non-local students (excluding exchange students)
- Studying locally-accredited degree programmes or above
- Study period ≥ 1 academic year

Job Types

- On-campus Part-time Job
- Summer Employment
- Study/curriculum-related Internship

***Briefing session of employment policies in Sep & Oct**

No Objection Letter (NOL) – Part-time & Summer Job

優秀人才及內地居民組(六樓)
Quality Migrants and Mainland Residents Section (6/F)

電話 Tel (852) 2829 XXXX 圖文傳真 Fax (852) 2119 XXXX

覆函請註明本處檔號 In reply please quote this ref:

«Reference»

«Student Name»

«University»



香港特別行政區政府
入境事務處

Immigration Department
The Government of the Hong Kong
Special Administrative Region

11 June 2014

Dear Sir/Madam,

Application for Student Visa/Entry Permit

I am pleased to inform you that your visa/entry permit application for studying «Programme» at «University» has been approved.

Please note that under Regulation 2(3) of the Immigration Regulations, Cap. 115A, the permission to be given to you to land in Hong Kong as a student shall be subject to the following conditions of stay-

- (a) that you shall become a student only at a specified school, university or other educational institution and undertake such course of study as may be approved by the Director of Immigration; and
- (b) that you shall not-
 - (i) take any employment, whether paid or unpaid; or
 - (ii) establish or join in any business.

In addition, the permission for you to remain in Hong Kong will end upon expiry of your limit of stay or four weeks after termination of your studies, whichever is the earlier.

Notwithstanding the above, the Director of Immigration has no objection to your taking up part-time on-campus employment for not more than 20 hours per week throughout the year and employment during the summer months within the currency of your limit of stay while you remain as a student at «University» studying «Programme» in Hong Kong.

- “On-campus” employment here is taken to mean that-
- (a) the employment must take place within the campus of «University»; or if the work location is outside campus, the employer is «University» itself; and
 - (b) you should only take up employment at operators designated by «University» i.e. designated operators.

The above-mentioned “campus” includes only the campus of «University» but excludes the campus of any subsidiary and associated body of «University» proper or its self-financing arms (if any). You should check with your institution for the list of designated operators. In addition, you are not allowed to roll over unused hours from one week to another. A week here is taken to mean a period of seven days from Sunday to Saturday.

Regarding the employment during the summer months, there is no limit in relation to work hours and location. “Summer months” here are taken to mean the period from 1 June to 31 August, both dates inclusive.

Please note that the Director of Immigration’s “no objection” set out in this letter will only be valid on the condition that you have a valid permission to remain as a student in Hong Kong. In the event that you switch to another institution and/or study programme (even within the same institution), the “no objection” by the Director of Immigration shall lapse and the relevant terms set out in this letter will no longer apply. Your eligibility for taking up part-time on-campus employment and off-campus summer job will be assessed afresh.

Please be reminded that you are not allowed to take up any employment outside the scope set out in this letter without permission from the Director of Immigration. A breach of any condition of stay will render you liable to prosecution and removal from Hong Kong under the Immigration Ordinance, Cap. 115.

Yours faithfully,

()
for Director of Immigration

No Objection Letter (NOL) – Study/Curriculum-related Internship

Appendix II



優秀人才及內地居民組(六樓)
Quality Migrants and Mainland Residents Section (6/F)

電話 Tel (852) 2829 XXXX 圖文傳真 Fax (852) 2119 XXXX

覆函請註明本處檔號 In reply please quote this ref:

«Reference»

«Student Name»

«University»

香港特別行政區政府
入境事務處
Immigration Department
The Government of the Hong Kong
Special Administrative Region

11 June 2014

Dear Sir/Madam,

Application for Student Visa/Entry Permit

I am pleased to inform you that your visa/entry permit application for studying «Programme» at «University» has been approved.

Please note that under Regulation 2(3) of the Immigration Regulations, Cap. 115A, the permission to be given to you to land in Hong Kong as a student shall be subject to the following conditions of stay-

- (a) that you shall become a student only at a specified school, university or other educational institution and undertake such course of study as may be approved by the Director of Immigration; and
- (b) that you shall not-
 - (i) take any employment, whether paid or unpaid; or
 - (ii) establish or join in any business.

In addition, the permission for you to remain in Hong Kong will end upon expiry of your limit of stay or four weeks after termination of your studies, whichever is the earlier.

Notwithstanding the above, the Director of Immigration has no objection to your taking up study/curriculum-related internship as may be arranged or endorsed by the «University» during the academic year of 2014/15 while you remain as a student studying «Programme» at «University» and your limit of stay in the HKSAR remains unexpired. The duration of the internship is up to one year or one-third of the normal duration of «Programme», whichever is the shorter. Nevertheless, the

internship cannot take place before you are officially registered with «University» and begin attending the scheduled classes of «Programme» in Hong Kong, or when you have fulfilled all the course/credit requirements for graduation, e.g. you have just finished your final year of study.

Please note that the Director of Immigration's "no objection" set out in this letter will only be valid on the condition that you have a valid permission to remain as a student in Hong Kong. In the event that you switch to another institution and/or study programme (even within the same institution), the "no objection" by the Director of Immigration shall lapse and the relevant terms set out in this letter will no longer apply. Your eligibility for taking up study/curriculum-related internship will be assessed afresh.

Please be reminded that you are not allowed to take up any employment outside the scope set out in this letter without permission from the Director of Immigration. A breach of any condition of stay will render you liable to prosecution and removal from Hong Kong under the Immigration Ordinance, Cap. 115.

Yours faithfully,

(Name of Officer)
for Director of Immigration

Employment Policies for Non-local Students – Immigration Arrangements for Non-local Graduates (IANG)

Eligibility

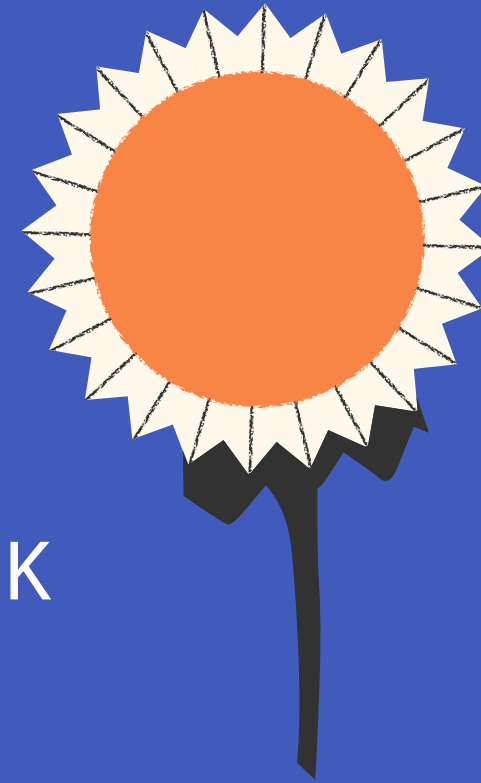
- Non-local students obtained a degree or higher qualification in a full-time locally accredited programme in Hong Kong

Features

- 12 months work visa in Hong Kong
- No limitation on job nature
- Eligible for renewal

***Briefing session of employment policies in Sep & Oct**

Contact US!



Address: 2/F, Benjamin Franklin Centre, CUHK
Telephone: (852) 3943 7202
Fax: (852) 2603 5933
Email: cpdc@cuhk.edu.hk
Website: <http://cpdc.osa.cuhk.edu.hk>
Facebook: <https://www.facebook.com/cuhkosacpdc>
Instagram: https://www.instagram.com/cuhk_osa_cpdc/
LinkedIn: <https://www.linkedin.com/company/cuhkosacpdc>
Office Hour: Mon to Thu 8:45 am - 1:00 pm & 2:00 pm – 5:30 pm
Fri 8:45 am - 1:00 pm & 2:00 pm – 5:45 pm
Sat, Sun and Public Holiday Closed

